



About The Range

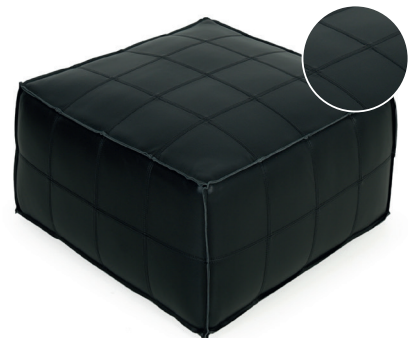
The Oscar Ottoman in Leather can be used for extra seating or pair with the addition of a tray for a coffee table. It's hard to top leather. From rich and refined to sleek and modern, our leather collection has a style and fit for everyone.

Options

	WIDTH	DEPTH	HEIGHT
Ottoman	850mm	850mm	445mm

How to measure

Get accurate measurements by referring to the below.



*Please note: variations in dimensions and appearance can occur due to construction differences in upholstery covering (fabric & leather). Measurements should be used as a guide only. Icons above are for demonstration purposes and are not a replica of the actual product.

Learn more about our furniture care & warranty support at hunterhome.co.nz or see us in-store
Furniture, homewares, design services & room designs to inspire | 0800 777 807